



# USE OF FORCE

October to December 2019

**INCIDENTS DEPLOYED TO: 41,733**

**ARRESTS: 6,511**

**INCIDENTS WHERE FORCE WAS USED: 3,649**

Multiple officers may submit forms for a single incident  
**SUBMISSIONS: 5,504**

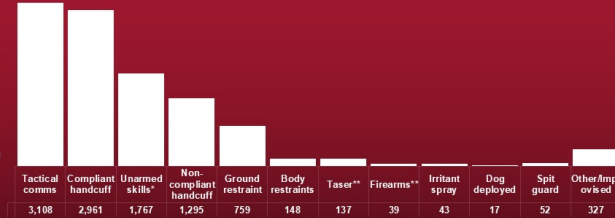
**COMPLAINTS AFTER USE OF FORCE: 38 = 1.04%** total incidents where force was used

## FORCE USED

**10,653 Total**

\*includes pressure points and strikes, restraints and take downs

\*\* Taser and firearms use includes all types of deployment (including being aimed but not discharged)



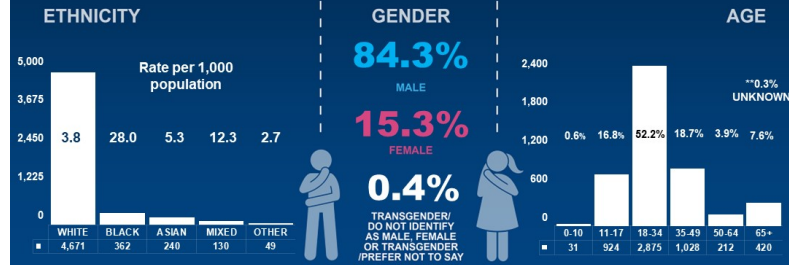
**OFFICERS: INJURED 231**

**ASSAULTED 247**



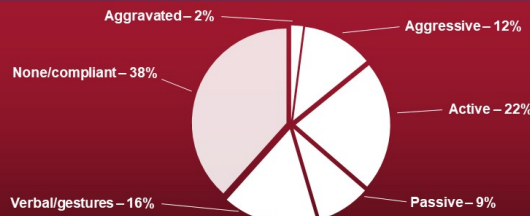
## SUBJECT PROFILE

Figures may not add up to 100% due to rounding errors



## SUBJECT CONDUCT

Type of resistance



## SUBJECTS ARRESTED

**77%**

## DETAINED UNDER MENTAL HEALTH ACT

**2%**

## REQUIRED HOSPITAL TREATMENT\*

\*Not necessarily as a result of police use of force - e.g. injured prior to police intervention

**2%**